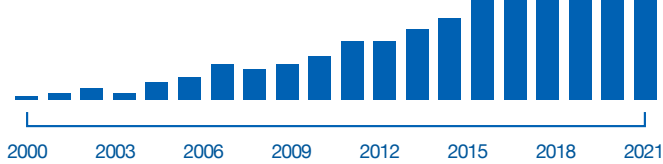


**Cybercrime is estimated to cost the world \$6 trillion per year by 2021**

**Corporate costs of cybercrime 2000 - 2021**



**Recent years have shown no shortage of hacks, cyber theft, and security breaches involving some of the largest companies in the world.**

Major Fortune 1000 companies across every industry realize it is vital to protect both internal and customer data, and some companies are struggling to stay ahead of security. Identity governance, privacy, and proprietary information security are the top-of-mind concerns for the world's biggest companies today.

This is precisely why CyberloQ was created, to provide a seamless, easy to use, and highly effective technology solution to meet the cybersecurity challenges that all large corporations face today.

At CyberloQ, we understand that corporate accountability is shifting into a digital space where data becomes a fundamental concern.

Major companies need to invest in a strong cyber defense now more than ever. CyberloQ helps Fortune 1000 companies with large, global business concerns to protect their information and their brand name.

## Enterprise Level Multi-Factor Authentication

McKinsey & Co. recently spoke with information security experts from 25 of the world's biggest corporations, and one of the biggest concerns was that, as companies are expected to be more accountable digitally, more access points for potential hacks are created. With CyberloQ's enterprise-level MFA technology, you can be assured that the people who enter your corporate infrastructure are those that belong there.



Advanced Credit Technologies' patent-pending CyberloQ™ technology can be a critical tool in helping a large corporation protect

proprietary internal data along with sensitive customer information. Pre-emptively securing against breaches, CyberloQ uses Multi-Factor Authentication (MFA) to confirm that only authorized users, on approved devices and within designated locations, can access secured data within a corporate IT ecosystem.

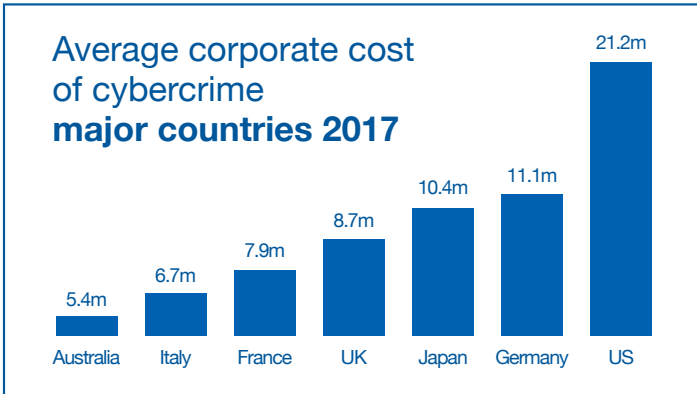
CyberloQ features Comprehensive tracking details and reporting for each information activation across users, devices, and locations.

- **GPS and Location Reports**
- **User Tracking Reports**
- **History Reports**
- **Activation Calendar**
- **Activation Map**



## Iron Clad Enterprise Security

Cybersecurity experts told McKinsey that one of their top concerns is the increasing sophistication of hackers and cyber criminals. They even joked that hackers sometimes appear to be better funded than their own internal corporate IT staff.



At CyberloQ, we understand that constant cybersecurity innovation isn't a capability that a corporation can develop overnight. That's why we're continually developing future enhancements to create additional layers of security to our current MFA solution, including innovative technologies like biometrics to provide iron-clad security to any major company we partner with.

And in the event of a breach, information, data, and records will be readily available to any public-sector partners or entities that might likely become involved in the event of a cyber-attack on a large company or corporation. Anyone from the Federal Bureau of Investigation (FBI), Federal Trade Commission (FTC), or National Institute of Standards and Technology (NIST).

CyberloQ™ technology is rooted in providing both domestic and international cybersecurity services to the Government for over 30 years, and we're bringing that same expertise to some of the world's largest corporations. CyberloQ™ technology is a custom-built, proactive, real-time solution for end-to-end enterprise-level security that the biggest global corporate organizations demand. CyberloQ is here to help secure your proprietary internal information and sensitive customer data. We partner with your internal IT department to create an in-house, iron-clad digital security infrastructure.

## 52 percent of corporations that suffered cyber attacks in 2017 don't plan to make changes in their cyber security approach. How will their limited strategy affect the customer's information security?

One of the most meaningful changes that any Fortune 1000 organization can implement is to create a virtually impenetrable corporate surveillance perimeter with CyberloQ's unique "Always Off" functionality.



### "Always Off" Corporate Surveillance Perimeter

CyberloQ's administrator-defined geofencing provides enterprise-level capabilities to ensure that the user or device is within a specified geographical perimeter prior to granting access. This location can be as large as a city or – using physical beacons – as small as a room providing the ultimate perimeter surveillance scalability. If the perimeter of the geofence is breached, the account (and all access to it) is automatically disabled.

Data protected by CyberloQ is accessible only to employees, executives, corporate partners, public sector regulators, or customers who have registered within your corporation's CyberloQ enabled database – such as Active Directory or LDAP.

CyberloQ enabled client accounts remain "inactive" until users verify themselves with a mobile device, smartphone, laptop, or tablet – in combination with a PIN to access protected data. This MFA authentication credential model creates a strong perimeter around any critical corporate or sensitive customer data.



Mobile App

Supports GPS and Location Permissions



1.833.292.3757

[info@cyberloq.com](mailto:info@cyberloq.com)

[www.cyberloq.com](http://www.cyberloq.com)